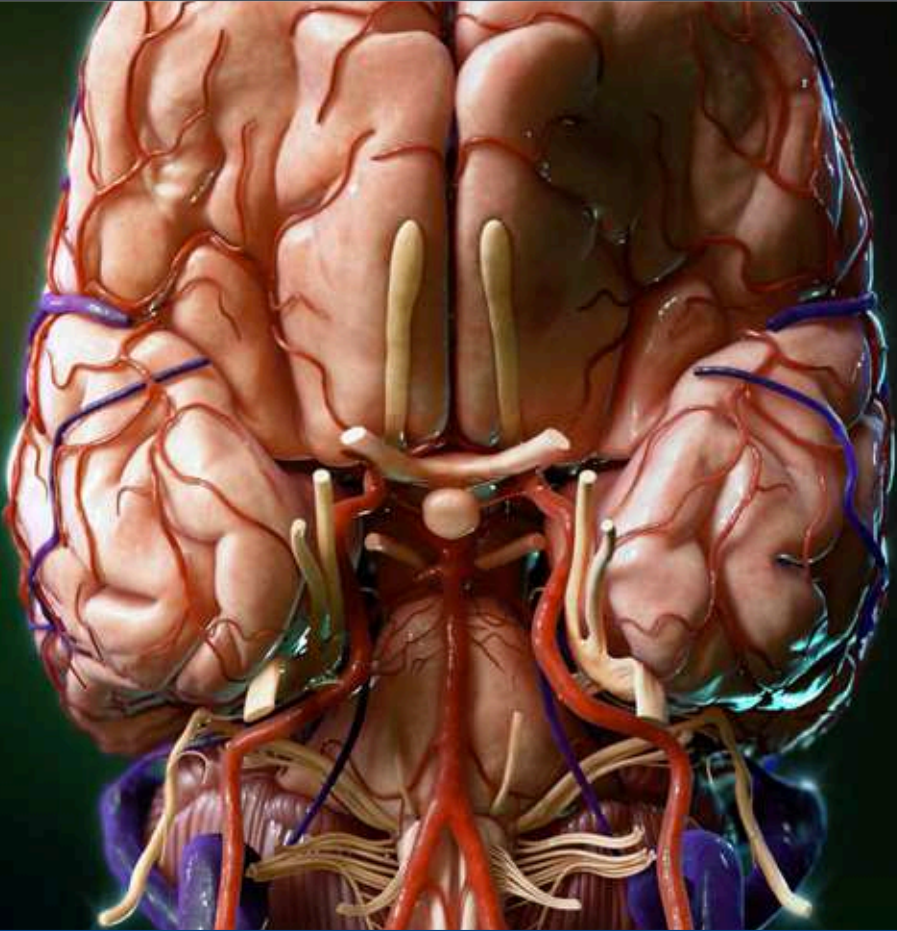


2017

Barrow Pituitary Symposium
Focus: Management of Pituitary Tumors



Saturday, October 28, 2017

Registration and Agenda Inside

Goldman Auditorium
350 West Thomas Road | Phoenix, Arizona



Barrow Pituitary Symposium Goal

Attendees will have a deeper understanding of the clinical pathways available for patients demonstrating symptoms of pituitary complications after surgery, refer patients to proper specialists when necessary, reduce chronic hormonal abnormalities, and improve quality of life.

Objectives

1. Describe radiation applications in regards to pituitary tumors and recognize potential complications associated with this treatment.
2. Discuss the surgical indication and limitations for the treatment of Cushing's Disease.
3. Describe the contribution of Prolactin levels to Inferior Petrosal Sinus Sampling (IPSS).
4. Discuss the efficacy of Growth Hormone Replacement in adults.
5. Identify the complex symptomology of panhypopituitarism.
6. Describe the manner in which pituitary dysfunction presents in pediatrics.

Accreditation

St. Joseph's Hospital and Medical Center (SJHMC) is accredited by the Accreditation Council for Continuing Medical Education to provide continuing medical education for physicians.

Designation

St. Joseph's Hospital and Medical Center designates this live activity for a maximum of 6.25 *AMA PRA Category 1 Credits*[™]. Physicians should only claim credit commensurate with the extent of their participation in the activity.

Disclosure Policy

It is the policy of St. Joseph's Hospital and Medical Center to insure balance, independence, objectivity and scientific rigor in all of its sponsored or jointly sponsored educational programs. All those in control of content will disclose all relevant relationships with commercial interests. Detailed disclosures will be made in the activity handout materials.

The information presented at this CME program represents the views and opinions of the individual presenters, and does not constitute the opinion or endorsement of, or promotion by, St. Joseph's Hospital and Medical Center or its affiliates. Content has been reviewed to ensure it is balanced, unbiased, and promotes quality or improvements in healthcare rather than the proprietary interests of any commercial interest. However, each program attendee must always use his/her own personal and professional judgment when considering further application of this information, particularly as it may relate to patient diagnostic or treatment decisions including, without limitation, FDA-approved uses and any off-label uses.

Faculty

Andrew S. Little, MD

*Co-Director, Barrow Interdisciplinary Skull Base Program
Program Co-Director, Barrow Pituitary Center
Barrow Neurological Institute*

Oliver J. Oatman, DO

*Pediatric Endocrinologist
Barrow Neurological Institute at Phoenix Children's Hospital*

Monica Rodriguez, MD

*Endocrinologist
Barrow Neurological Institute*

William L. White, MD

*Chief, Surgical Endocrinology
Surgical Director, Barrow Pituitary Center
Barrow Neurological Institute*

Guest Faculty

Beverly M.K. Biller, MD

*Endocrinologist
Neuroendocrine Clinical Center
Massachusetts General Hospital*

Nelson M. Oyesiku, MD, PhD

*Director, Laboratory of Molecular Neurosurgery and Biotechnology
Emory School of Medicine*

Mary Lee Vance, MD

*Professor of Internal Medicine and Neurosurgery
Pituitary Clinic
University of Virginia Health System*

AGENDA | Barrow Pituitary Symposium

Focus: Management of Pituitary Tumors

Saturday, October 28, 2017

7:30 Registration & Breakfast

7:55 Welcome

Andrew Little, MD

8:00 Update on Cushing's Disease

Beverly Biller, MD

8:35 Radiosurgery for Pituitary Tumors: The University of Virginia Experience

Mary Lee Vance, MD

9:10 Surgery for Cushing's Disease

Andrew Little, MD

9:45 Contribution of Prolactin Levels to Inferior Petrosal Sinus Sampling

William White, MD

10:05 Break

10:15 Pituitary Surgery: What Every Endocrinologist Should Know

Nelson Oyesiku, MD

10:50 Update on Acromegaly

Mary Lee Vance, MD

11:25 Topics in Adult Growth Hormone Replacement

Beverly Biller, MD

12:00 Lunch

1:15 Craniopharyngioma: The Medical and Surgical Challenge
(3-D Presentation)

Nelson Oyesiku, MD

1:50 When to Stop Pituitary Tumor Medications Prior to Radiation Treatment

Mary Lee Vance, MD

2:25 Break

2:45 Pituitary Dysfunction in Pediatrics

Oliver Oatman, DO

3:20 Panyhypopituitarism: Presentation of Unusual Cases

Monica Rodriguez, MD

4:00 Adjourn

Visiting Arizona

Outdoor Activities

Phoenix is known for great weather, and people can't wait to get outdoors to hike, bike, swim and play. There are many opportunities in Phoenix and the surrounding area. Visit www.visitphoenix.com to find out which activities interest you!

Northern Arizona

You have probably seen pictures of the awe inspiring Grand Canyon or the beauty of the red rock in Sedona. If you have time to spend an extra day or two exploring Arizona, you may want to take a drive to Northern Arizona. Each town is unique and charming and offers an array of activities, dining and shopping opportunities. Sedona is approximately a 2 1/2 - hour drive north of Phoenix, and the Grand Canyon is approximately a 4-hour drive north of the city. The official website for the Grand Canyon is <http://www.nps.gov/grca>

Dress

Dress for all sessions is business casual. Temperatures in October average from 73 degrees during the day to 46 degrees at night. Please keep in mind that meeting room temperatures vary. So, wear layered clothing to ensure your comfort.

Dining

Phoenix is home to some of the world's finest chefs and the best restaurants offering your taste buds the opportunity to try everything from Thai to Mexican to traditional American cuisine. To learn more about the dining options you will have during your stay in Phoenix, visit www.azcentral.com/ent/dining

Golf

In Greater Phoenix, more than 200 championship golf courses are available to visitors year round. Bring your clubs and soak up the sun. For a listing of golf courses, visit www.visitphoenix.com

Shopping

There are many venues to shop and dine in Phoenix, including the Biltmore Fashion Park, Kierland Commons, Desert Ridge Market Place, Scottsdale Fashion Square, Chandler Fashion Center, The Borgata of Scottsdale and endless smaller boutiques throughout the state.



Hotels Near Barrow Neurological Institute

Hotels Within Walking Distance

HILTON SUITES

10 E. Thomas Rd., Phoenix, AZ 85012
602-222-1111
Barrow ID: 0701078
www.phoenixsuites.hilton.com

HILTON GARDEN INN

4000 N. Central Ave., Phoenix, AZ 85012
602-279-9811
www.hiltongardeninn.com

HAMPTON INN MIDTOWN

160 W. Catalina Dr., Phoenix, AZ 85013
602-200-0990
www.hamptoninn.com

Resorts Within 15-20 Minutes

RITZ CARLTON PHOENIX

2401 E. Camelback Rd., Phoenix, AZ 85016
602-468-0700
Corporate ID: BARROW
www.ritzcarlton.com/hotels/phoenix

ARIZONA BILTMORE RESORT & SPA

2400 E. Missouri Ave., Phoenix, AZ 85016
602-955-6600
www.arizonabiltmore.com

THE PHOENICIAN SCOTTSDALE

6000 E. Camelback Rd., Scottsdale, AZ 85251
480-941-8200
www.thephoenician.com

Registration Form

Barrow Pituitary Symposium | October 28, 2017

	Early Bird Registration <i>Deadline 9/29/17</i>	Late Registration <i>After 9/29/17</i>
MDs/DOs	\$150	\$200
Residents/Nurses/SJHMC Staff	\$90	\$140

Name _____

Email _____

MD DO RN Resident/Fellow Other

Institution _____

Address _____

City _____ State _____ Zip _____

Business Phone _____ Fax _____

Payment

Check or money order payable to: St. Joseph's Hospital and Medical Center
(A \$20 charge applies to checks returned for insufficient funds.)

Charge my: AMEX VISA MC DISCOVER

Card # _____

Expires _____

Verification # _____ Billing Zip Code _____

Printed Name on Card _____

I authorize Barrow Neurological Institute to charge the amount determined by the Barrow Neurological Institute as registration fees to my credit card.

Signature _____

Register online:

www.barrowneuro.org/education/find-a-conference-or-cme-course/

Return registration form with payment to:

Barrow Neurological Institute
Conference Planning Office
350 West Thomas Road
Phoenix, Arizona 85013

Charge card registrations can be faxed to 602-230-4085.

For further information, call 602-406-3067

Refunds: A full refund, minus a 20% handling fee, will be made for cancellations prior to September 29, 2017. All refund requests must be received in writing by that date.

No refunds will be made thereafter.

